

Choose your trail



Rex Simpson 1Track 30 Nov 2015

Camilla and David Jordan



Track Overview



Category: Walking

Length: 7.16 km / 4.48 mi

Total Time: 3 hours 3 minutes

Average Speed: 2.35 kph / 1.46 mph

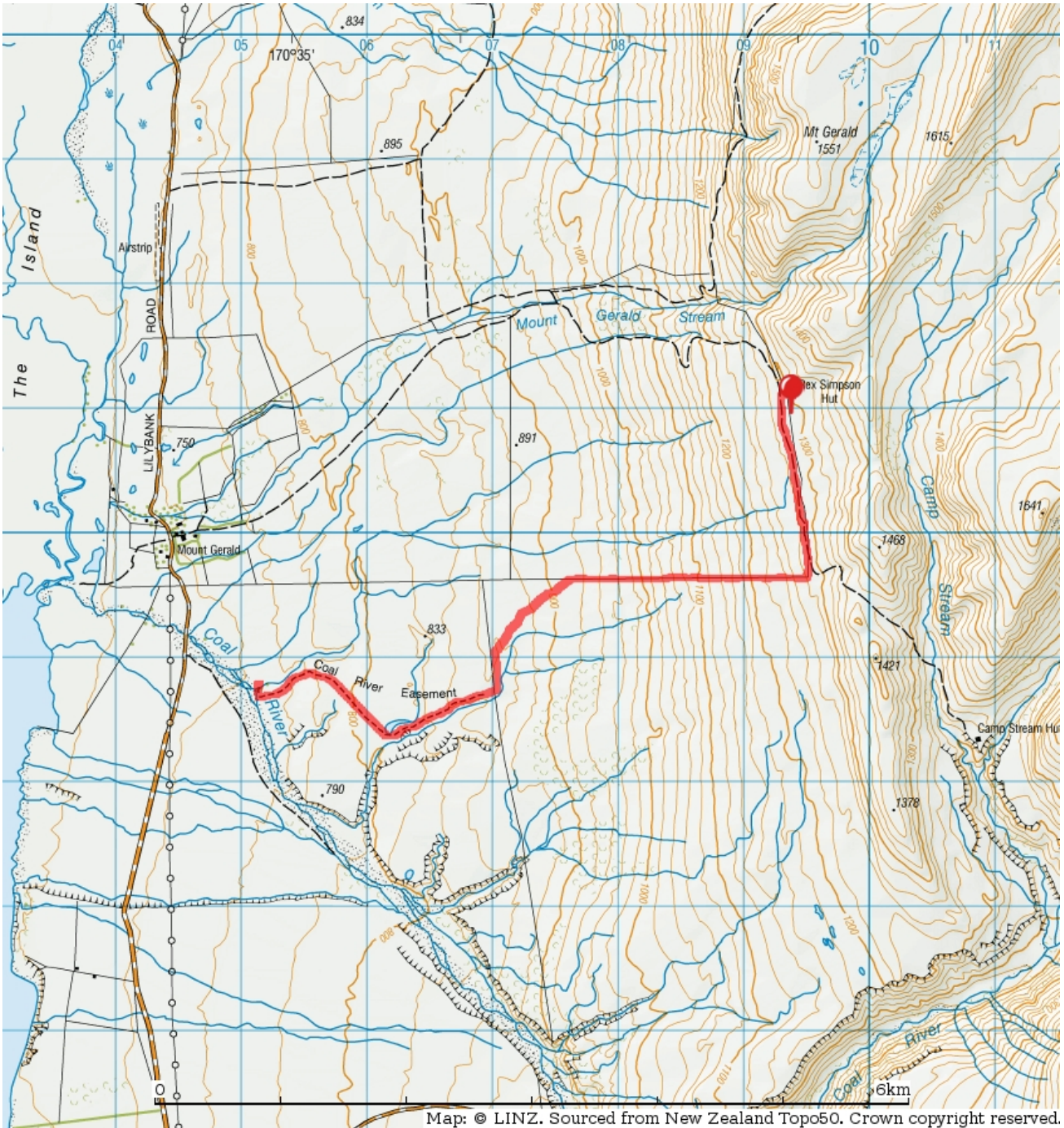
Track Start Time: 09:17:54 30th November 2015

Track End Time: 12:20:24 30th November 2015

Last Modified: 8th December 2015

Date Published: 5th December 2015

Choose your trail



Map: © LINZ. Sourced from New Zealand Topo50. Crown copyright reserved.

